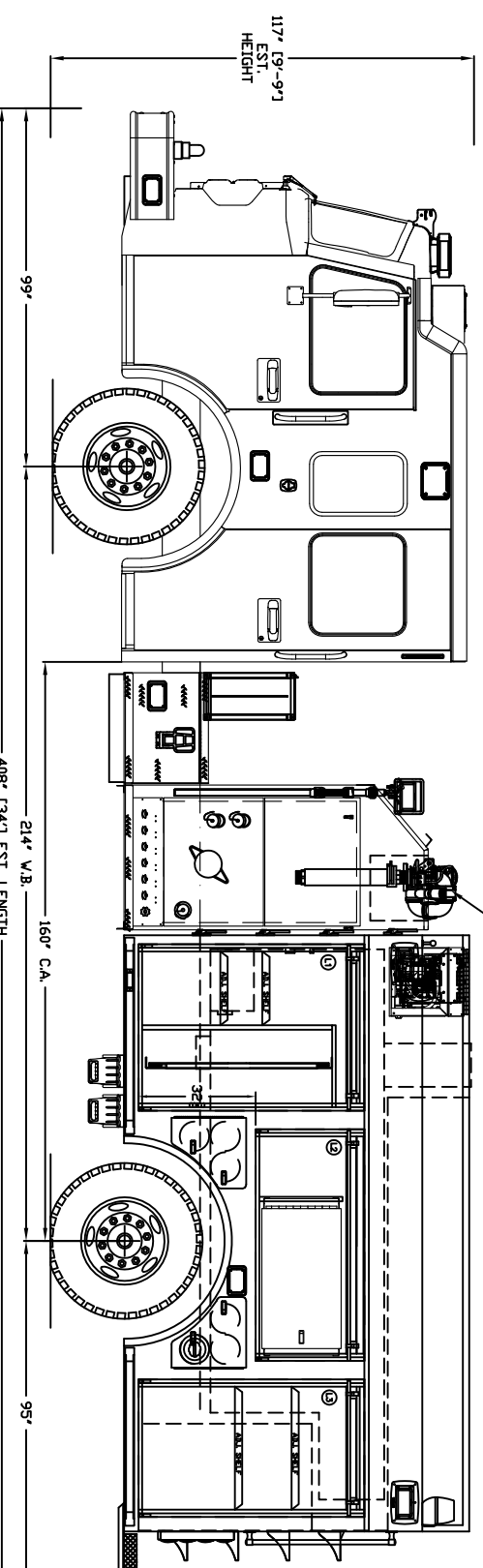
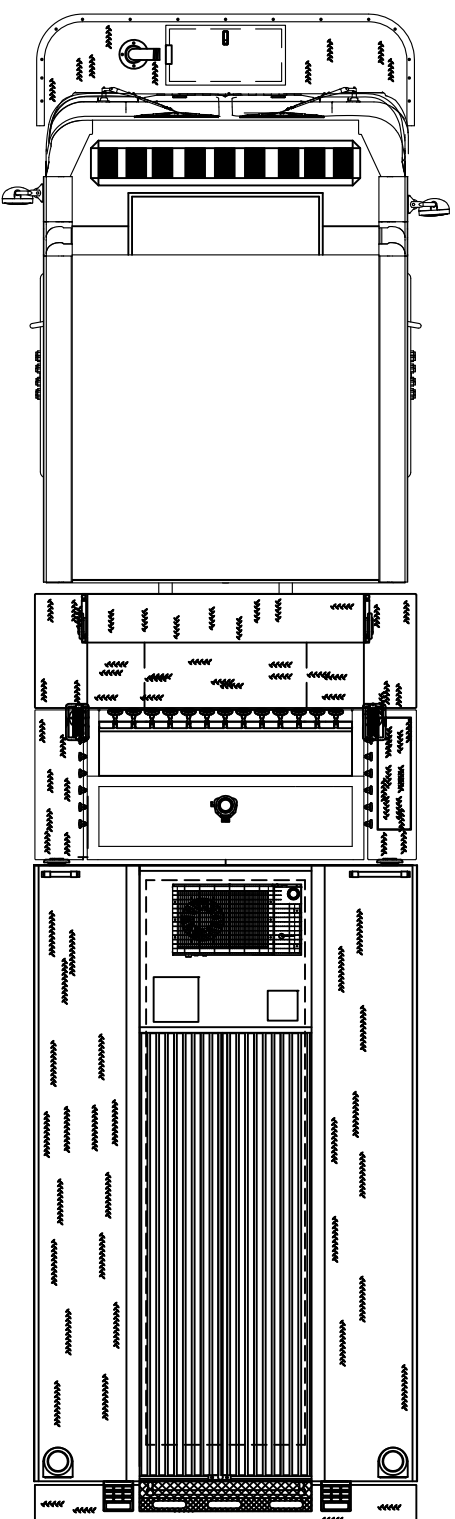
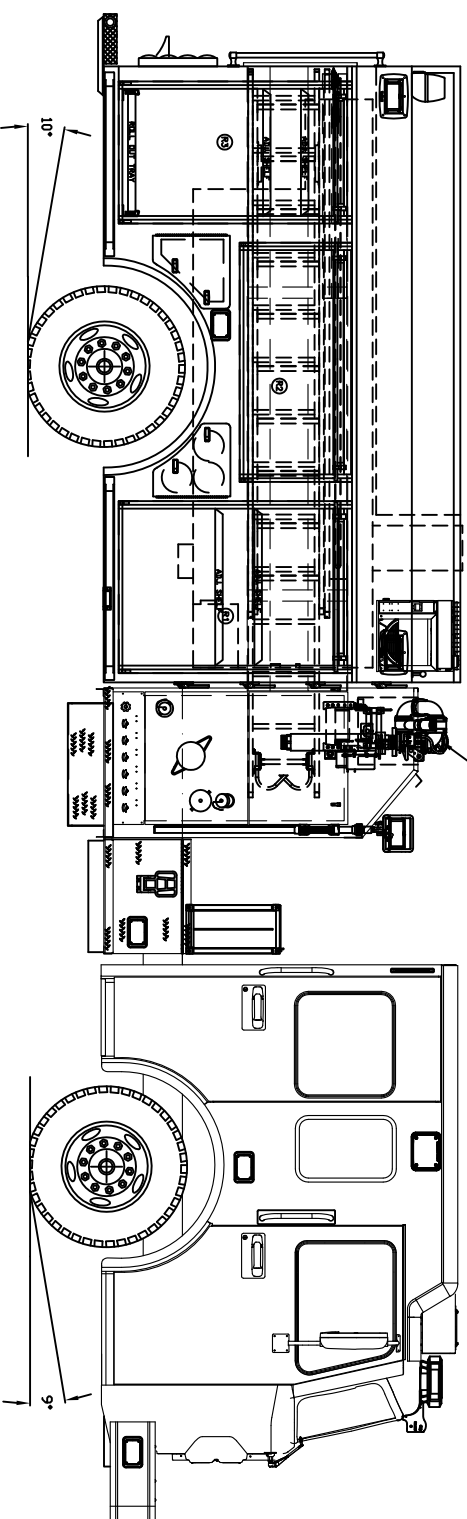
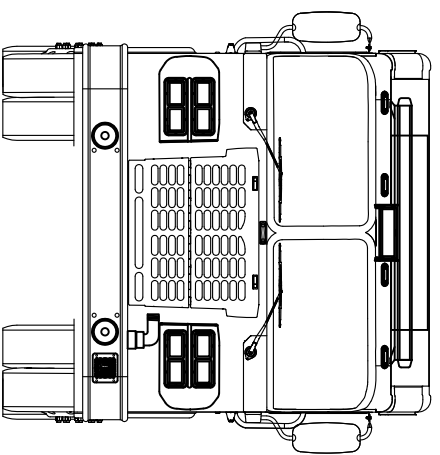



COMPT.	OPENING	UPPER	DEPTH	LOWER
L1	43W X 56.5H	25.75	25.75	
L2	61W X 24H	25.75	N/A	
L3	35W X 56.5H	25.75	25.75	
R1	43W X 56.5H	14.25	25.75	
R2	61W X 24H	14.25	N/A	
R3	35W X 56.5H	14.25	25.75	
T1	43W X 37H	27	27	
INTERMEDIATE DIVIDE HEIGHT:				
		R1/R3	26.5	
GROUND LADDERS & PIKE POLES				
ITEM	LADDER LENGTH	MODEL	QTY	
A	24' 2-SEC	PEL-24	1	
B	16' ROOF	PRL-16	1	
C	10' ATTIC	FL-10	1	
D	PIKE POLES	-	2	
E				
F				
G				
H				
I				



PUMP: WATERIUS CSUC20 1500 GPM
 TANK: POLY 1000 USG
 FDAM: 25 USG CELL (FUTURE USE)
 BODY: STAINLESS
 HOSE BED: 68 CUBIC FEET
 COMPARTMENTS: 238 CUBIC FEET
 CHASSIS: SPARTAN METRO STAR MP D

SHOP ORDER

Approval Signatures		Date
CUSTOMER		
DEALER		
SWEAL SALES		
PRODUCTION		
ENGINEERING		
		
WE BUILD RESPECT.		
Revisions	SWEAL FIRE APPARATUS SNYDER, NE 68664	
R&R FIRE TRUCK REPAIR INC. NORTHVILLE, MI		
Drawn By: STUMPE Checked:	Scale: 3/8"=1' Date: 9/9/15	Material:
11 x 17	SD	S4571